

DATASHEET

PRODUCT SNAPSHOT

- High-performance 990Mbps full-duplex wire-speed data security
- Maximum security through Continuous Mutual Authentication and Dynamic Security Key Exchange of network end points via patented RPM™ algorithm, not session-based security keys
- Single transmission handshake using short-lived authentication and encryption keys
- NIST-compliant 128- or 256-bit AES encryption with always new *single-use* key per transmission; no key is sent in the transaction
- Layer 2 protection for secure point-to-point network bridging using simplified configuration
- Scalability via Layer 3 (IP) mode for secure point-to-point or point-to-multipoint links
- Embedded firewall for granular traffic control (Optional)
- TLS Handshake Mode with simplified key management for multipoint links; keys centrally managed and automatically changed
- Network flexibility with preservation of VLAN tags
- Scalable to thousands of end points
- Simplified key management from central location

CONTACT US

Relevant Security Corp.
990 S. Broadway, Suite 400
Denver, CO 80209
Tel: +1.877.576.9665
Fax: +1.303.455.8808
sales@relevantsecurity.com



Relevant Security's RPM™ secured network appliance

Securing Every Transaction, Every Time, On Any Network

Relevant Security Corp's *RS-family* of next-generation network security appliances provides the highest level of protection for transmission of converged data, voice, and video over your point-to-point or point-to-multipoint network. The family consists of the RS 10 (up to 10Mbps), RS 100 (up to 100Mbps), and RS 1000 (up to 990Mbps); all capable of wire-speed *continuous* mutual authentication and encryption of your network traffic.

At the heart of each RS product is Relevant's patented Real Privacy Management™ (RPM) technology.

Unlike static session-based network security using well-know methods like PKI, IPsec, and SSL that may allow network breaches after the one-time authentication, RPM is a new method for providing real-time, scalable security through continuous end-site authentication and dynamic rekeying of the data encryption cipher while maintaining network performance.

Utilizing RPM provides network security managers and end-users the peace of mind knowing that each and every network transmission is continuously authenticated between the appliances and encrypted minimizing the potential for network breaches or successful man-in-the-middle, impersonation, or dictionary attacks.

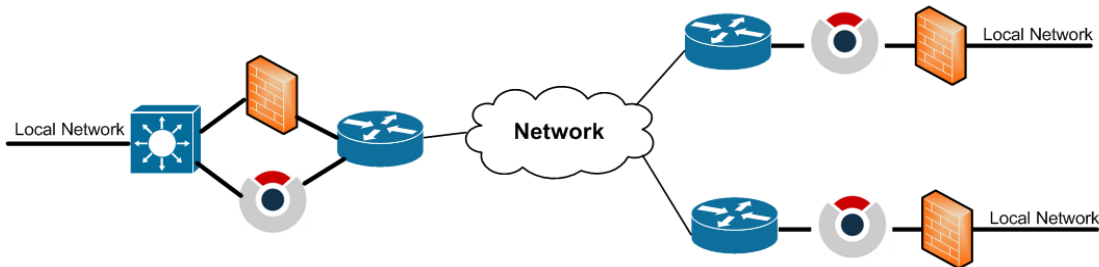
Placed either in-line or out-of-line, the RS 1000 is well suited for point-to-point or point-to-multipoint network applications to continuously secure inter-datacenter inter-office, or inter-region data, voice, and video applications connected via private or leased circuits.

Product options for the RS 1000 include:

- High-Availability (HA) via VRRP for increased reliability
- FIPS 140-2 Level 1 certified cryptographic module for US Federal Government mandated security
- Secure multicast content delivery for high-performance multicast applications like video-on-demand

Network Topology

This diagram shows two common options for RS 10 deployment.



Option A: Most Flexible

- Out-of-line for most flexible deployment
- Existing Layer 3 switch allows flexible policy creation
- L3 switch sends only packets requiring RS security
- More scalable: add more RS appliances as capacity needs increase
- Fail to wire or second HA RS appliance

Option B: Easiest to Deploy

- In-line with router and firewall for simplest deployment
- Transparent to firewall and router
- No need for new firewall – use RS firewall capability
- No configuration changes to existing network
- Secure data encapsulation to other RS appliances
- Fail to wire or second HA RS appliance

Technical Specifications

Performance:

- Up to 990Mbps full-duplex

Encryption:

- AES 128-bit, CBC mode
- AES 256-bit, CBC mode

Security Key Generation:

- RPM™ continuous key generation
- TLS
- Static session key

Interfaces & Indicators:

- (4) 10/100/1000BaseT (RJ45) with multiple personality port configuration allowing per-port characteristics (LAN, WAN)
- LEDs: LAN1, LAN2, HDD, Power
- Reset button

Management Interfaces:

- Web-based GUI via http and https
- Local customizable management user list and profiles for all services and features
- SNMPv2, read-only for performance monitoring
- syslog

Physical and Environmental:

- Size: 1RU, mini format
- Power: 110VAC
- Weight: approximately 6 lbs
- Temperature: 0°C to 70°C

Supported Protocols & Features:

- IEEE 802.3
- IPv4
- LACP port channel for all ports
- Routing: static, RIP
- VLAN tag preservation
- MPLS tag preservation
- VLAN trunking (802.1q)
- DHCP: server, relaying, and DNS Masquerading/Caching for each LAN Interfaces
- DHCP, PPTP and PPPoE client configuration for each WAN interfaces
- DNS: dynamic DNS for each WAN interface
- Stateful firewall and NAT for inbound and outbound traffic
- NTP client and server
- Link modes:
 - Ethernet (Layer 2) bridged tunnel mode
 - IP (Layer 3) point-to-point and point-to-multipoint links
 - Multicast content delivery application

All specification subject to change.

Ordering

Part Number	Description
RS1000	RS 1000 appliance
RS1000-FIPS	FIPS 140-2 compliant AES cryptographic module license for RS1000 appliance
RS1000-HA	High-availability license for RS 1000 appliance
RS1000-MC	Multicast license for RS 1000 appliance
Contact Relevant Security Corp or distributor for availability	